
SoClean™ AIR PURIFIER

Featuring Celios® Advanced Air Purification Technology



Filter Kit

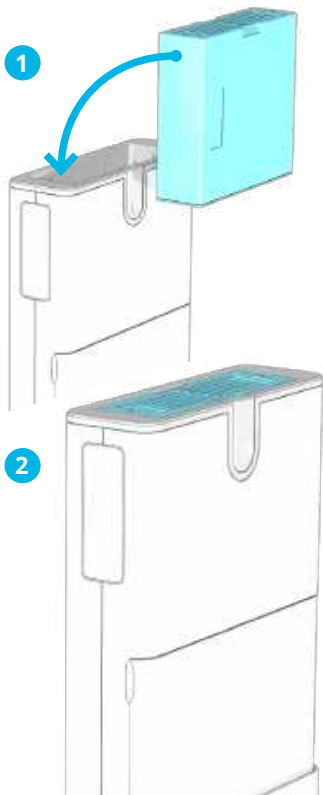
INSTALLATION

Prior to installing replacement filters, remove and discard old filters.

Install the Core Filter

This filter captures ultrafine particulates down to 10 nanometers in size. You will need to replace your Core Filter about every 8 months.

1. Slide the Core Filter into the Core with the grill facing up.
2. The filter clicks into place when properly installed.



CUSTOMER SUPPORT

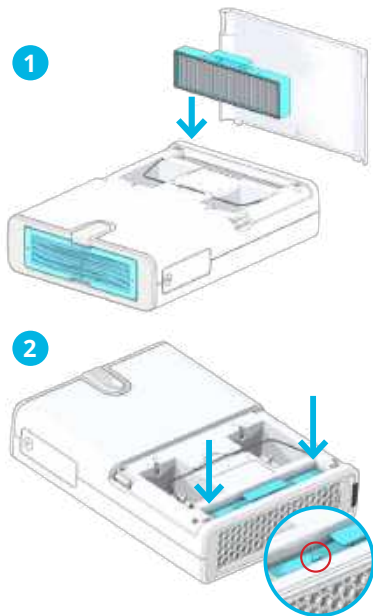
If you have any questions about your SoClean Air Purifier, visit [SoClean.com/air-user-manual](https://www.soclean.com/air-user-manual) or contact us by phone or email:

866-501-3705
info@soclean.com

Install the Pre Filter

The Pre Filter is made from material often found in HVAC systems, specifically designed to capture large airborne particles, such as dust, pollen, and pet dander.

1. Turn the Core over, so the Celios logo is facing down. Remove the back panel at the bottom of the unit.
2. Slide the Pre Filter into place with the arrows pointing toward the top of the Core. Make sure to push the Pre Filter completely into the Core so that the back panel can fully close.



You received two Pre Filters. Install one and save the other for future use.

Install the Carbon Filter

The Carbon Filter removes gases, odors, and VOCs emitted from common household products.

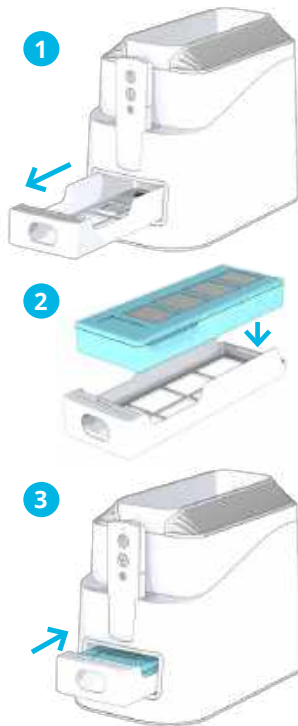
1. Remove the Carbon Filter tray from the Main Stand.
2. Place the Carbon Filter into the tray as shown.
3. Slide the tray back into position in the Main Stand.

Note: The Carbon Filter tray will click when fully installed.

IMPORTANT:

The Core should be removed from the Main Stand when installing or removing the Carbon Filter.

You received two Carbon Filters. Install one and save the other for future use.



**THREE FILTERS NEEDED
FOR OPERATION**



CORE FILTER



CARBON FILTER



PRE FILTER



**TWO EXTRA
REPLACEMENT
FILTERS**

**TIME TO REORDER
FILTER KIT ONCE USED**



INSTALLING THE AIR FILTERS

Each Filter Kit contains a total of five filters:

- (1) Core Filter
- (2) Carbon Filters
- (2) Pre Filters

The SoClean Air Purifier requires three of these filters to operate. The remaining two are extra, replacement filters for future use.

You will need to order a replacement Filter Kit about Every 8 months, depending on usage. The Core Filter lasts twice as long as the Carbon and Pre Filters. For more information regarding when to replace your filters, see page 31 of the User Manual.

To order a SoClean Air Purifier Filter Kit, please visit our website at SoClean.com/air.

